

ENGINEERED LIFTING SOLUTIONS

## HOISTING FOR EXTREME APPLICATIONS



**ULTRA-LOW HEADROOM TROLLEY /  
HOIST COMBINATION**

**1,000KG – 10,000KG LIFTING CAPACITY**

Leaflet No. KITO-81660:01

## ULTRA-LOW HEADROOM TROLLEY / HOIST COMBINATION

1,000KG – 10,000KG LIFTING CAPACITY

### Designed and manufactured according to:

- ▶ EC machinery directive 2006/42/EC
- ▶ EN13157
- ▶ Manufactured in the Netherlands

### Standard features:

- ▶ Suitable for extremely narrow spaces in low headroom applications
- ▶ Light weight
- ▶ Low pulling force on the hand chain
- ▶ Chain hoist executed with double safety pawl, safe and sure brakes
- ▶ Chain hoist with overload protection by slipping clutch
- ▶ Surface treatment 2 layer paint system and power coating, colour Munsell 6YR6/14
- ▶ Nickel plated load chain, grade V (G 100) in acc. with standard EN818-7
- ▶ Hand chain electric galvanized
- ▶ Trolley wheels with life time lubricated bearings
- ▶ Wheel break support and anti-tilt device integrated

### Optional:

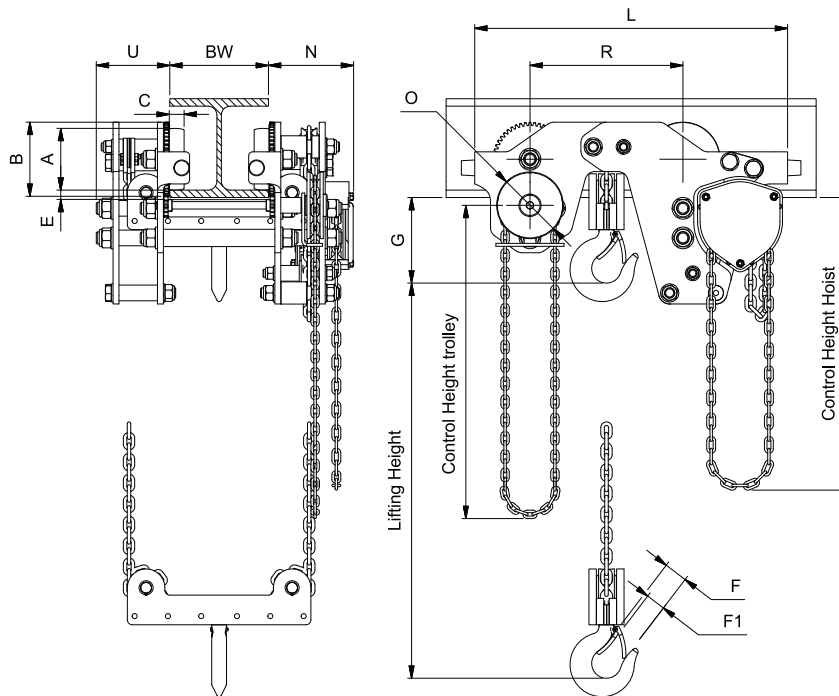
- ▶ Explosion protected execution zone 1
- ▶ Special surface protection according to ISO 12944
- ▶ 3.1 load test certificate
- ▶ 3.1 material certificate for load bearing parts of the trolley
- ▶ Canvas chain bag, steel or stainless steel container
- ▶ Solid bronze wheels
- ▶ Parking device for parking in unloaded condition
- ▶ Stainless steel 316 load chain and hand chain
- ▶ Stainless steel nameplate with tag number

### Special options:

- ▶ Also available in rack and pinion driven execution for operation under inclination.

### Remark:

Ultra-low headroom hoist units are executed with a fixed suspension set within the range of the beam width as mentioned in the tables.



| Capacity<br>kg | Article number | Chassis | Fixed beam<br>width in range<br>mm | No. of<br>falls | Chain<br>size<br>mm | max.<br>pulling<br>force<br>hoist<br>kg | max.<br>pulling<br>force<br>trolley<br>kg | Weight<br>3 meters<br>lift<br>kg | Head-<br>room<br>G | Dimensions |      |    |    |      |      |     |      |     |     |      |
|----------------|----------------|---------|------------------------------------|-----------------|---------------------|---|---|----------------------------------|--------------------|------------|------|----|----|------|------|-----|------|-----|-----|------|
|                |                |         |                                    |                 |                     |   |   |                                  |                    | A          | B    | C  | E  | F    | F1   | R   | L    | U   | N   | O    |
| 1,000          | 81660-01100    | 22 kN   | 74-300                             | 2               | 5                   | 21                                      | 13  | 45                               | 130                | Ø80        | Ø100 | 22 | 21 | 34,6 | 29   | 226 | 466  | 152 | 104 | Ø100 |
| 2,000          | 81660-02200    | 33 kN   | 90-300                             | 2               | 6,3                 | 24                                      | 18  | 86                               | 162                | Ø100       | Ø120 | 25 | 22 | 40   | 36   | 266 | 551  | 150 | 111 | Ø135 |
| 3,000          | 81660-03300    | 52 kN   | 106-300                            | 2               | 7,1                 | 29,5                                    | 18  | 140                              | 183                | Ø125       | Ø150 | 30 | 19 | 46   | 42,5 | 310 | 635  | 174 | 149 | Ø135 |
| 5,000          | 81660-06400    | 84 kN   | 119-300                            | 2               | 9                   | 38                                      | 20  | 315                              | 267                | Ø160       | Ø190 | 35 | 36 | 40   | 38   | 430 | 894  | 208 | 196 | Ø300 |
| 10,000         | 81660-10400    | 124 kN  | 134-300                            | 4               | 9                   | 38                                      | 30  | 410                              | 270                | Ø160       | Ø190 | 35 | 35 | 50   | 47   | 630 | 1100 | 208 | 196 | Ø375 |

\* Larger capacities up to 25,000kg on request

Changes in design and measurements reserved.

### Van Leusden BV

Parelhoenweg 2 | 4791 PA Klundert | The Netherlands  
Tel. +31 168 385 225 | [www.vanleusden.com](http://www.vanleusden.com) | [info@vanleusden.com](mailto:info@vanleusden.com)

LIFTING EXPECTATIONS