

ENGINEERED LIFTING SOLUTIONS

HOISTING FOR EXTREME APPLICATIONS



HD3C RACK AND PINION DRIVEN TROLLEY

SPECIAL DESIGNED TO HANDLE INCLINATIONS
500 KG – 12,500 KG LIFTING CAPACITY

Leaflet No. KITO-83600:01

HD3C RACK AND PINION DRIVEN TROLLEY

SPECIAL DESIGNED TO HANDLE INCLINATIONS

500 KG – 12,500 KG LIFTING CAPACITY

Designed and manufactured according to:

- ▶ EC machinery directive 2006/42/EC
- ▶ EN13157
- ▶ Manufactured in the Netherlands

Standard features:


- ▶ The self-braking gear box is suitable for 5° heel and trim angles
- ▶ Unique 3 bolts design which ensures stability and safe situation
- ▶ Wheel break support and anti-tilt device integrated
- ▶ Trolley wheels with life time lubricated bearings
- ▶ Suspension for all kind of hoist
- ▶ Suitable for all types of beams
- ▶ Surface treatment trolley 2 layer paint system 80µm, RAL7021
- ▶ Hand chain electric galvanized
- ▶ Operational temperature -20°C +40°C

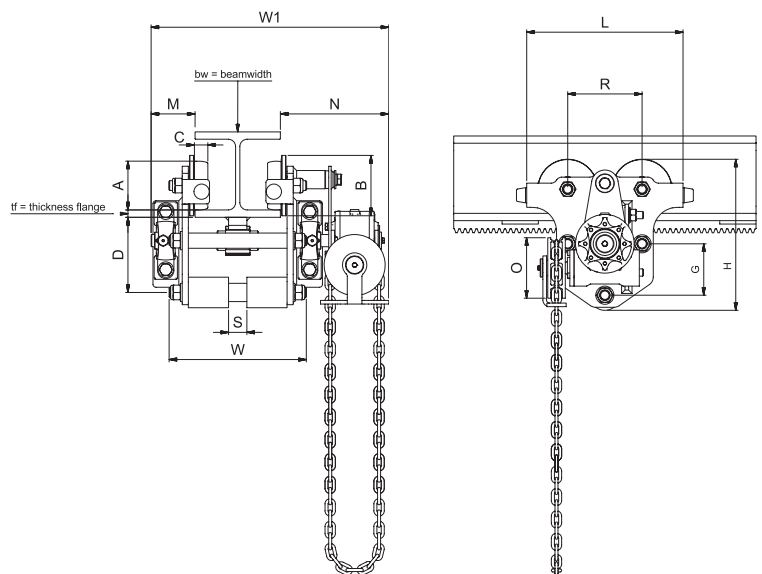
Remark:

The minimum beam radius is based on the maximum beam width which is specified in the table. For smaller curved beams always contact us or your local agent.

Maximum INP profile restriction for 6kN = INP220, 11kN = INP300, 22kN = INP360, 33kN = INP400, 52/64kN = INP450

Optional:

- ▶  Also available in explosion protected execution
- ▶ Explosion protected execution
- ▶ Operational temperature -40°C +40°C
- ▶ Special surface protection acc. to ISO 12944
- ▶ Solid stainless steel or bronze wheels
- ▶ Stainless steel nameplate with tag number
- ▶ Stainless steel 316 hand chain
- ▶ Rubber buffers mounted on trolley
- ▶ General arrangement drawing in 2D dwg and 3D step
- ▶ 3.1 load test certificate
- ▶ 3.1 material certificate for load bearing trolley parts
- ▶ Also available in electrical and pneumatic execution
- ▶ Also available in stainless steel 316 execution



| Capacity kg | Article number RT execution | Article number RV execution | Chassis | Fixed beam width min-max mm | Max. inclination angle | Modul | Min. beam radius mm | Weight kg | Dimensions | | | | | | | | | | | |
|----------------|--------------------------------|--------------------------------|---------|--------------------------------------|------------------------------|-------|------------------------------|--------------|------------|-----|----|-----|-----|---------|---------|-----|-----|-----|-----|-----|
| | | | | | | | | | A | B | C | L | H | W | W1 | R | D | M | N | O |
| 1,000 | 83600-01151 | 83600-01152 | 11 kN | 55-254 | 5° | M=3 | 1000 | 17 | 60 | 75 | 18 | 195 | 210 | BW+ 70 | BW+ 240 | 99 | 109 | 70 | 175 | 100 |
| 2,000 | 83600-02251 | 83600-02252 | 22 kN | 74-305 | 5° | M=3 | 1000 | 23 | 80 | 100 | 22 | 260 | 250 | BW+ 85 | BW+ 250 | 123 | 124 | 75 | 180 | 100 |
| 3,200 | 83600-03351 | 83600-03352 | 33 kN | 90-305 | 5° | M=3 | 1750 | 38 | 100 | 120 | 25 | 305 | 290 | BW+ 105 | BW+ 272 | 144 | 137 | 80 | 200 | 100 |
| 5,000 | 83600-05251 | 83600-05252 | 52 kN | 106-305 | 5° | M=4 | 2150 | 65 | 125 | 150 | 30 | 380 | 370 | BW+120 | BW+ 340 | 174 | 200 | 90 | 250 | 135 |
| 6,300 | 83600-06451 | 83600-06452 | 64 kN | 106-305 | 5° | M=4 | 2150 | 75 | 125 | 150 | 30 | 380 | 370 | BW+ 120 | BW+ 340 | 174 | 200 | 90 | 250 | 135 |
| 8,000 | - | 83600-08451 | 84 kN | 119-305 | 2° | M=6 | 2950 | 110 | 160 | 190 | 35 | 450 | 475 | BW+ 150 | BW+ | 220 | 250 | 105 | 290 | 195 |
| 10,000 | - | 83600-10451 | 104 kN | 131-305 | 2° | M=6 | 2950 | 110 | 160 | 190 | 35 | 450 | 475 | BW+ 150 | BW+ | 220 | 250 | 105 | 290 | 195 |
| 12,500 | - | 83600-12451 | 124 kN | 131-305 | 2° | M=6 | 2950 | 135 | 160 | 190 | 35 | 450 | 480 | BW+ 150 | BW+ | 220 | 250 | 110 | 300 | 195 |

* Larger capacities up to 20,000kg on request
S dimension to be specified by customer

Changes in design and measurements reserved.

Van Leusden BV

Parelhoenweg 2 | 4791 PA Klundert | The Netherlands

Tel. +31 168 385 225 | www.vanleusden.com | info@vanleusden.com

LIFTING EXPECTATIONS